



Visit our website at: www.teleadapt.com

PowerHub USB™

TA-7535

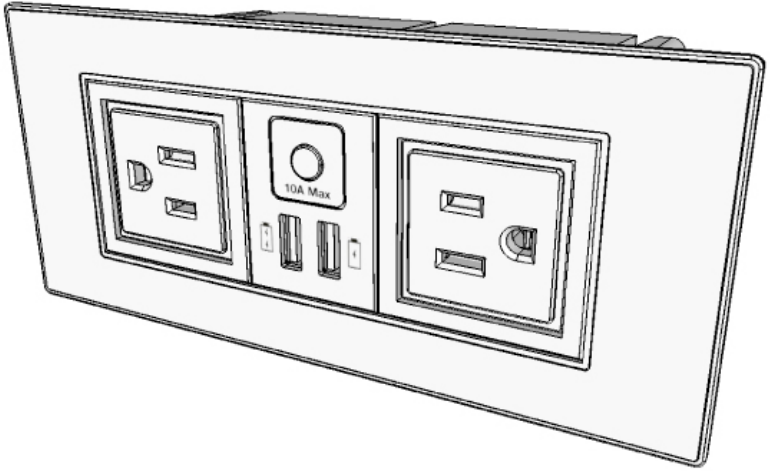


Table of Contents

- 2** Products Covered By This Installation Guide
- 3** PowerHub USB Part Numbers
- 4** Important Safety Instructions
- 4** Approval Information
- 8** What Is Included In The Box
- 9** Preparation For Installation
- 9** Installation
- 12** Additional Information
- 12** Warranty
- 13** Contact Details

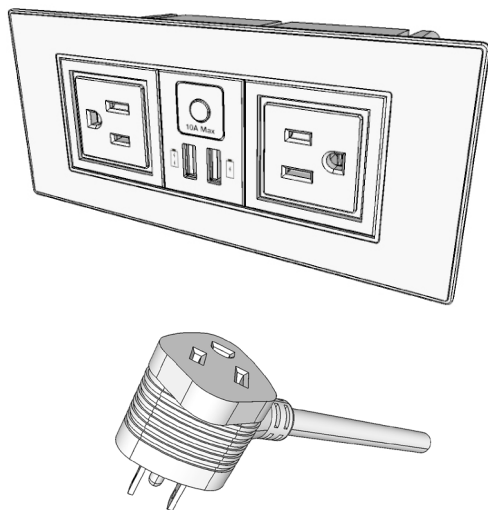
Products Covered By This Installation Guide

The TeleAdapt PowerHub USB (TA-7535US) is a furniture power distribution unit which provides 2 tamper resistant US NEMA receptacles and 2 USB charging sockets (1 high power - 2.4A and 1 standard power -1A) all protected by a user resettable over current device.

The use of tamper-resistant receptacles gives industry leading protection against the accidental insertion of foreign objects into the power sockets and provides enhanced safety for all users.

The TA-7535US is provided with 2 trims (Slimline black and Slimline metallic) and a duplex power plug so the number of available outlets in a room is not reduced when it is fitted.

Installation is simple as the TA-7535US only requires a single connection to a US 120V/60Hz outlet, so fitting can be undertaken by anybody who has a screwdriver and does not require a qualified elect



*PowerHub USB with Tamper-resistant Sockets (TA-7535US).
Duplex Plug.*

PowerHub USB Part numbers:

TA-7535US-USN2

PowerHub USB with 2 metre rear power cable.

TA-7535US-USN3

PowerHub USB with 3.5 metre rear power cable.

It is also possible to supply the PowerHub USB with a straight, simplex NEMA plug (instead of the right angled duplex NEMA plug) if rear cabling needs to be pulled through a conduit. Please contact TeleAdapt for additional information and availability.

Important Safety Instructions

Read these instructions carefully before attempting any installation. Follow all instructions and heed all warnings. These instructions should be kept for future reference.

- 1** This equipment must be securely attached to furniture in strict accordance with these installation instructions.
- 2** This equipment is designed for indoor use only.
- 3** Only use with attachments and accessories as specified by the manufacturer.
- 4** The mains plug used to disconnect this equipment from its power source must be readily accessible at all times.
- 5** Ensure the power cord is uncoiled before installation.
- 6** Protect the power cord from being walked on or pinched particularly at plugs, convenience receptacles and the point where they exit from the equipment.
- 7** The power cord must be plugged into a mains socket outlet with protective earthing.
- 8** Clean only with a dry cloth.
- 9** Refer all servicing to qualified service personnel. Servicing is required when the equipment has been damaged in any way, for example if the power supply plug or cord is damaged, liquid has been spilled or objects have fallen into the equipment, the equipment has been exposed to rain or moisture, does not operate normally or has been dropped or damaged.

- 10 Unplug this equipment during lightning storms or when unused for long periods of time.
- 11 Do **NOT** defeat the safety purpose of the grounded plug. If the provided plug does not fit into your outlet consult a qualified electrician to replace the obsolete outlet.
- 12 Do **NOT** install or use this equipment near water.
- 13 Do **NOT** expose this apparatus to rain or moisture.
- 14 Do **NOT** expose to dripping or splashing. No objects filled with liquid such as vases shall be placed on the equipment.
- 15 Do **NOT** install near any heat sources such as radiators, convection heaters or other apparatus such as amplifiers that produce heat.
- 16 Do **NOT** exceed the maximum load of 10 amps.

Approval Information

The TA-7535US is UL listed for the USA and Canada and conforms to UL962A and UL60950.

Consignes de sécurité importantes

Veillez lire attentivement ces consignes avant de commencer l'installation. Veillez suivre les consignes et respecter toutes les mises en garde. Veillez conserver ces consignes pour référence ultérieure.

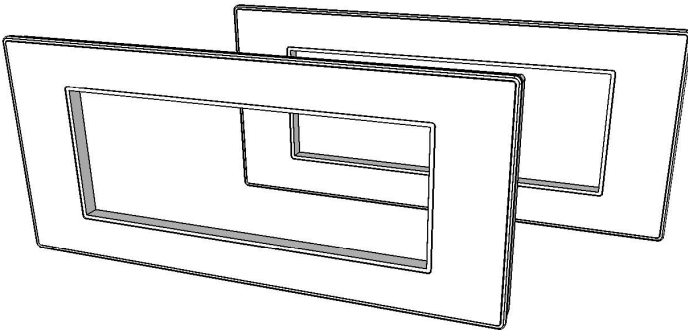
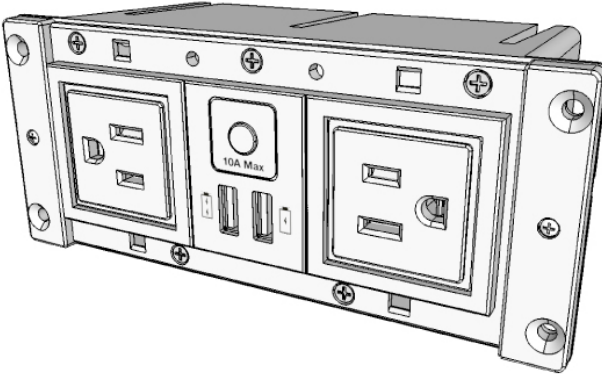
- 1** Cet équipement doit être fixé de manière sûre au mobilier en stricte conformité avec ces instructions d'installation.
- 2** Cet équipement est conçu pour une utilisation intérieure uniquement.
- 3** Utiliser uniquement avec les fixations et les accessoires tels que spécifiés par le fabricant.
- 4** La prise de secteur utilisée pour débrancher cet équipement de sa source d'alimentation doit toujours être facilement accessible.
- 5** S'assurer que le câble d'alimentation est déroulé avant l'installation.
- 6** Protéger le câble d'alimentation pour éviter de marcher dessus ou de le pincer, notamment au niveau des connecteurs, des prises de courant et du point de sortie de l'équipement.
- 7** Le câble d'alimentation doit être branché à la prise secteur équipée d'une protection par mise à la terre
- 8** Nettoyez à l'aide d'un chiffon sec uniquement.
- 9** Toutes les opérations d'entretien doivent être effectuées par le personnel de maintenance. Une intervention de maintenance est requise quand l'équipement a été endommagé d'une façon quelconque, par exemple si la finche ou le câble d'alimentation a été endommagé (e), si un liquide s'est déversé ou des objets sont tombés sur l'équipement, si l'équipement a été exposé à la pluie ou à l'humidité, s'il ne fonctionne pas correctement, s'il est tombé ou a été endommagé.

- 10 Débrancher cet équipement en cas d'orage ou de non utilisation prolongée.
- 11 Ne **PAS** altérer le dispositif de sécurité de la prise à terre. Si la fiche fournie n'est pas adaptée à votre prise, consulter un électricien qualifié pour remplacer la prise obsolète.
- 12 Ne **PAS** installer ou utiliser cet équipement près de l'eau .
- 13 Ne **PAS** exposer cet appareil à la pluie ou à l'humidité .
- 14 Ne **PAS** exposer l'appareil aux éclaboussures et aux gouttes d'eau. Ne pas placer sur l'équipement d'objet rempli d'eau comme un vase.
- 15 Ne **PAS** installer l'équipement à proximité d'une source de chaleur comme un radiateur, un convecteur ou tout autre appareil comme un amplificateur générant de la chaleur.
- 16 Ne **PAS** excéder une charge maximum de 10 amps.

What Is Included In The Box

Classic Trim

- 1 X** PowerHub USB Main Unit with Power Cord and Duplex Plug.
- 1 X** Black trim.
- 2 X** Metallic trim.
- 4 X** Fixing screws.
- 1 X** Installation Guide.



Preparation For Installation

The PowerHub USB is designed to be installed in furniture.

Ensure the location chosen for the equipment complies with the requirements of the “Important Safety Instructions”.

A cutout will need to be made in the furniture, cutout dimensions are given in the “Installation” section of this guide. Other than this the only tools you will need are a medium sized cross head screwdriver.

The minimum hole size the US duplex plug can pass through is 56mm (2.2”) x 40mm (1.6”).

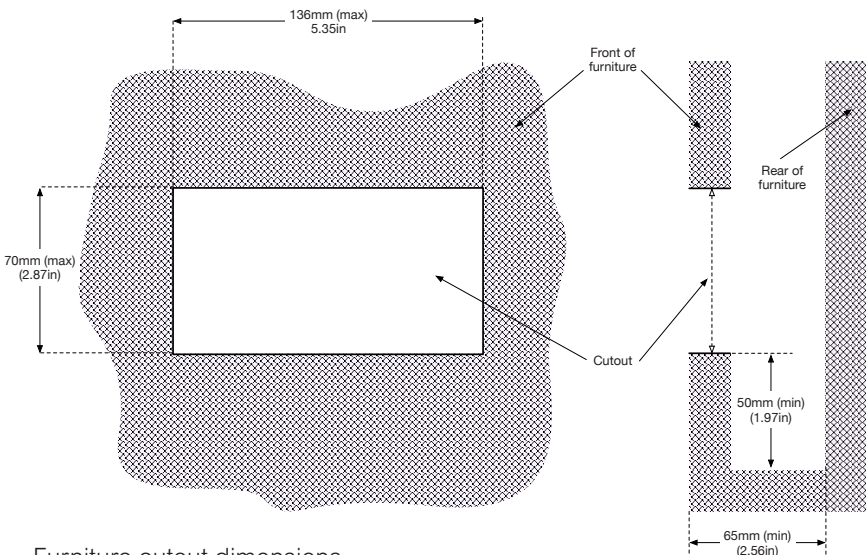
The PowerHub USB requires power from a standard 3-pin US 120V outlet.

Installation

Before starting installation make sure you have read and understood the “Important Safety instructions” on page 4-5 / 6-7 of this guide.

Step 1

Confirm the furniture cutout dimension to accommodate the PowerHub USB is within the limits shown below. Note that in addition to the minimum depth requirement of 65mm (2.56 in) there should also be at least 50mm (1.97 in) clearance below the unit to allow cabling to exit cleanly.



Furniture cutout dimensions

Step 2

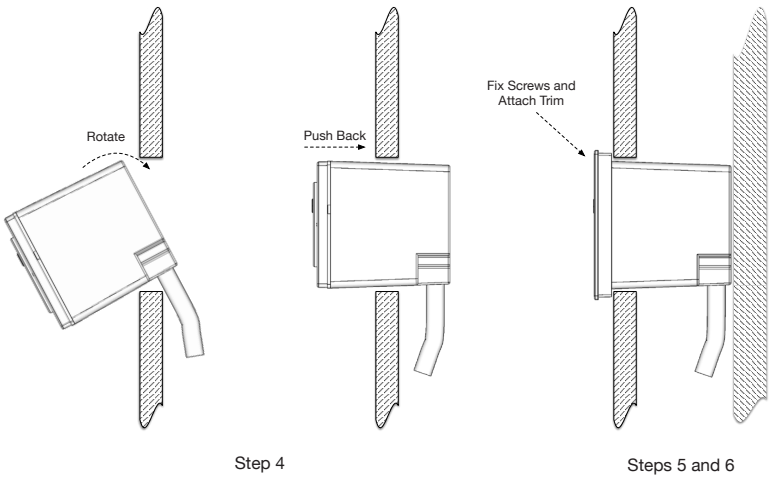
Remove the PowerHub USB, trims and screws from the box.

Step 3

Thread the rear power cable through the cutout in the furniture.

Step 4

Lean the PowerHub USB on the bottom of the cutout in the furniture and push it into the cutout by rotating it slightly



Fitting PowerHub USB through the Cut Out.

Step 5

Fasten the 4 cross head screws to fix the PowerHub in the furniture.

Step 6

Align the selected trim (black or metallic) with the PowerHub USB ensuring that the 2 small cutouts on the trim are on the bottom. Press firmly and evenly to clip the trim into place.

Step 7

Finally insert the plug on the end of the rear power cable into an appropriate 120V mains outlet.

Installation is now complete.

Additional Information

Overload Protection

The PowerHub USB has overload protection which cuts power to the front sockets and USB if an overload occurs.

Before resetting please make sure the equipment that caused the overload is no longer connected.

To reset press the small button located just above the USB sockets on the front of the unit.

USB Charging

The PowerHub USB provides 2 USB charging ports on the front of the unit. The left hand USB is suitable for tablets and mobile phones and can provide 2.4A at 5V. The right hand USB is suitable for mobile phones and can provide 1A at 5V.

Removing the PowerHub USB from Furniture

If you need to remove the equipment for any reason, first ensure the equipment is disconnected from the mains power source.

1. Unplug the PowerHub USB from the mains supply.
2. Use a medium flat blade screwdriver to release 2 clips on the bottom of the trim.
3. The trim can now be gently removed by hand. Be careful not to bend the trim excessively or it may deform or break.
4. Unscrew the 4 cross head screws and carefully withdraw the unit from the furniture being careful not to damage any cables.

Warranty

Please see TeleAdapt "Sales Terms & Conditions" which are available at <http://www.teleadapt.com/teleadapt/sales-terms-conditions.html>

Contact Details

Americas

TeleAdapt Inc
1315 Greg Street
Suite 110
Sparks
NV 89431
USA
Tel: +1 775 355 8585

Asia

TeleAdapt HK, Ltd
Unit G, 15/F, Block 2
Leader Industrial Center
No. 188-202 Texaco Road
Tseun Wan
Hong Kong
Tel: +852 2780 9020

Europe

TeleAdapt Limited
Axis 5
Rhodes Way
Watford
WD24 4YW
United Kingdom
Tel: +44 (0)1923 810200

Website

For information on other
TeleAdapt products designed
for the hospitality industry,
including specification
and cut sheet downloads,
please visit our website at:
www.teleadapt.com

Middle East

TeleAdapt Limited
Dubai Media City
Thuraya Tower 1
Office 1008
PO Box 500344
Dubai
UAE
Tel: +971 367 8283